

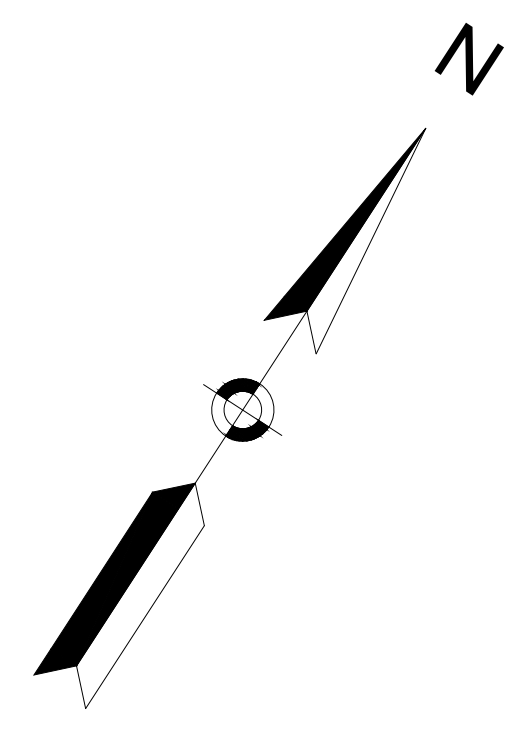
LEGEND

-  PROPOSED HOT MIX ASPHALT ROADWAY AND HOT MIX ASPHALT DRIVEWAY
-  PROPOSED CEMENT CONCRETE SIDEWALK AND CEMENT CONCRETE DRIVEWAY AND CEMENT CONCRETE PEDESTRIAN CURB RAMPS
-  PROPOSED GRASS/LANDSCAPE AREA
-  PROPOSED RAPID FLASHING BEACON
-  PROPOSED TRAFFIC SIGNAL
-  MBTA BUS STOP
-  MBTA BUS SHELTER


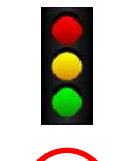
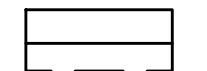
**WATERTOWN
ROUTE 16 (MOUNT AUBURN STREET)**

STATE	FED. AID PROJ. NO.	SHEET NO.	TOTAL SHEETS
MA	-		
PROJECT FILE NO. 607777			

FINAL DESIGN OPEN HOUSE RENDERING
SHEET 1 OF 18



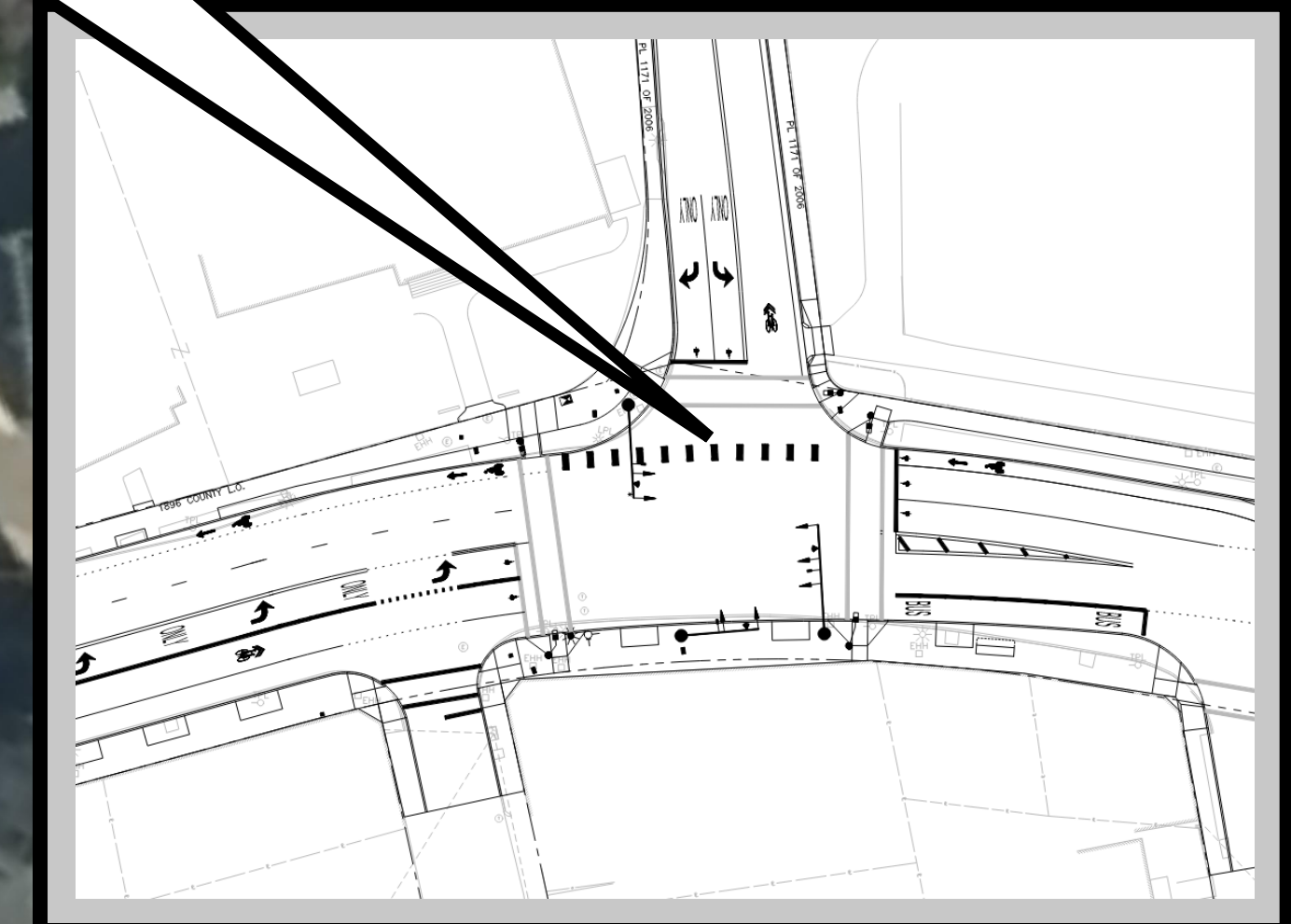
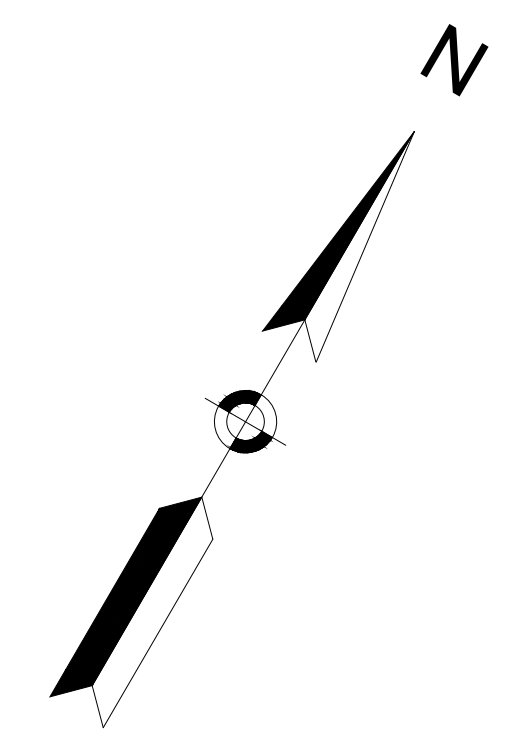
LEGEND

-  PROPOSED HOT MIX ASPHALT ROADWAY AND HOT MIX ASPHALT DRIVEWAY
-  PROPOSED CEMENT CONCRETE SIDEWALK AND CEMENT CONCRETE DRIVEWAY AND CEMENT CONCRETE PEDESTRIAN CURB RAMP
-  PROPOSED GRASS/LANDSCAPE AREA
-  PROPOSED RAPID FLASHING BEACON
-  PROPOSED TRAFFIC SIGNAL
-  MBTA BUS STOP
-  MBTA BUS SHELTER

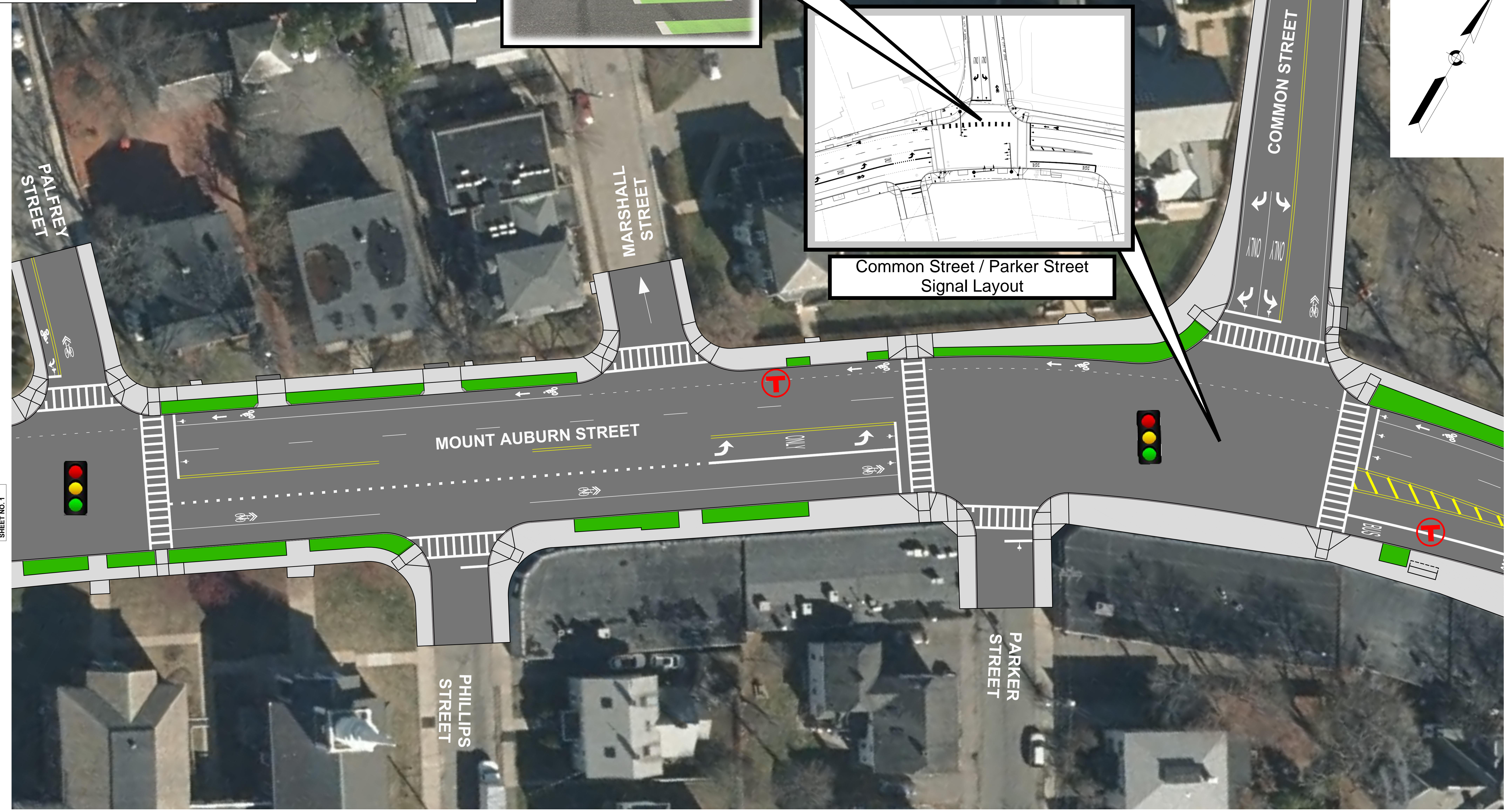
**WATERTOWN
ROUTE 16 (MOUNT AUBURN STREET)**

STATE	FED. AID PROJ. NO.	SHEET NO.	TOTAL SHEETS
MA	-		
PROJECT FILE NO. 607777			

FINAL DESIGN OPEN HOUSE RENDERING
SHEET 2 OF 18

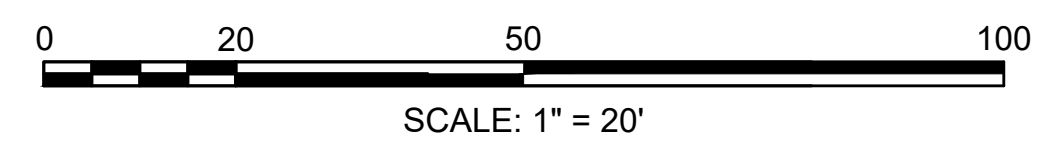


Common Street / Parker Street
Signal Layout



CONTINUED ON SHEET NO. 1

CONTINUED ON SHEET NO. 3



PREPARED BY: JUNE 27, 2023
Tighe & Bond
Engineers | Environmental Specialists

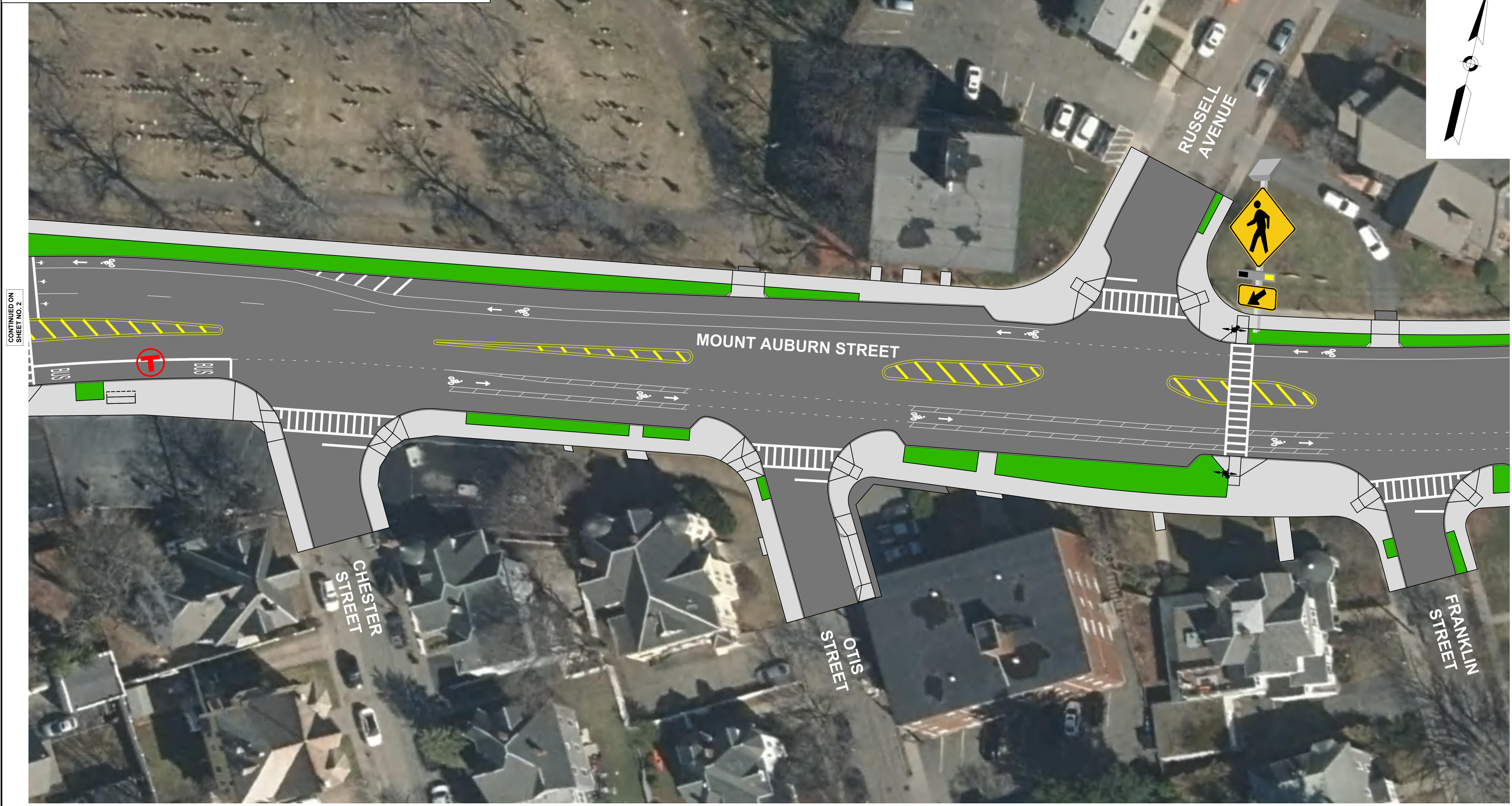
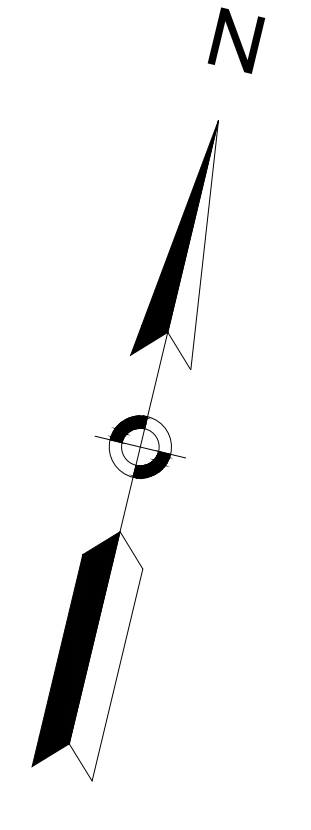
LEGEND

-  PROPOSED HOT MIX ASPHALT ROADWAY AND HOT MIX ASPHALT DRIVEWAY
-  PROPOSED CEMENT CONCRETE SIDEWALK AND CEMENT CONCRETE DRIVEWAY AND CEMENT CONCRETE PEDESTRIAN CURB RAMPS
-  PROPOSED GRASS/LANDSCAPE AREA
-  PROPOSED RAPID FLASHING BEACON
-  PROPOSED TRAFFIC SIGNAL
-  MBTA BUS STOP
-  MBTA BUS SHELTER

**WATERTOWN
ROUTE 16 (MOUNT AUBURN STREET)**

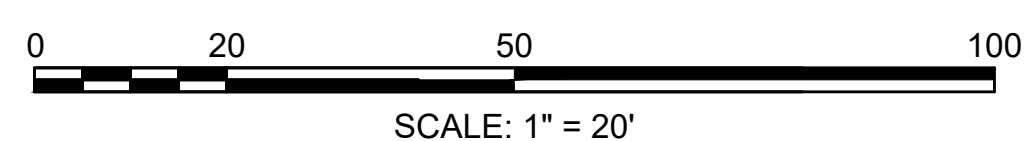
STATE	FED. AID PROJ. NO.	SHEET NO.	TOTAL SHEETS
MA	-		
PROJECT FILE NO. 607777			

FINAL DESIGN OPEN HOUSE RENDERING
SHEET 3 OF 18



CONTINUED ON SHEET NO. 2

CONTINUED ON SHEET NO. 4



PREPARED BY: JUNE 27, 2023
Tighe & Bond
Engineers | Environmental Specialists

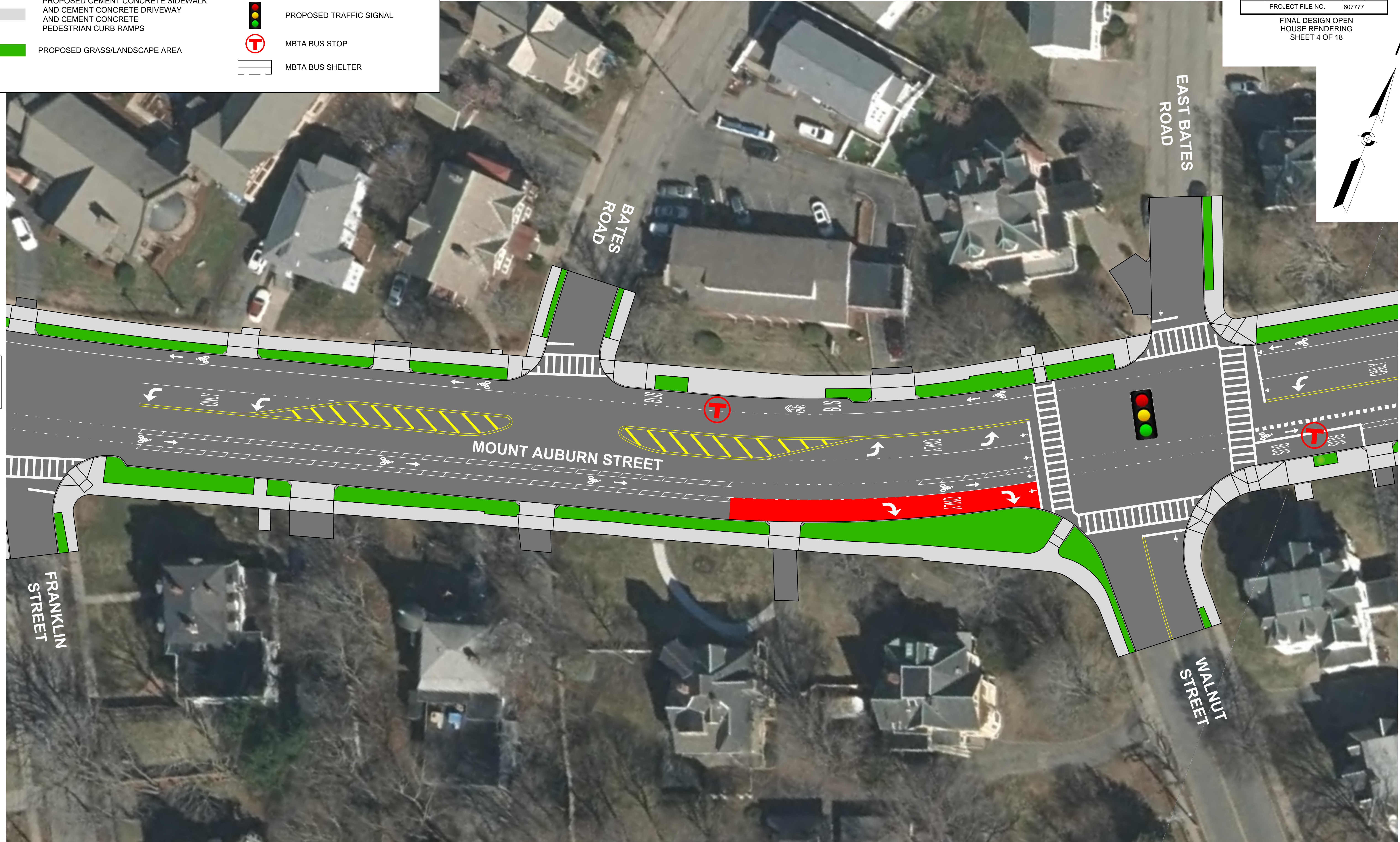
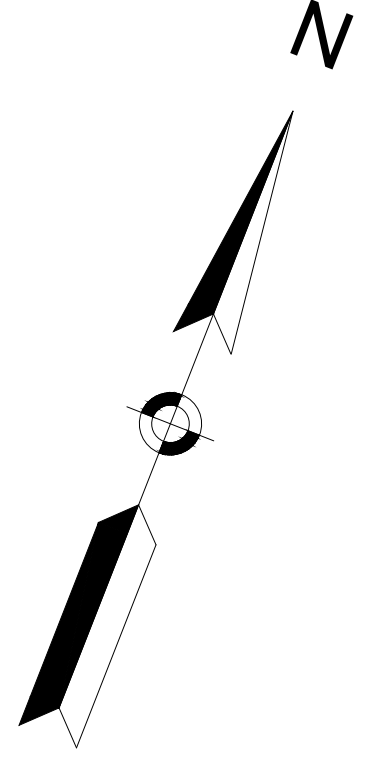
LEGEND

-  PROPOSED HOT MIX ASPHALT ROADWAY AND HOT MIX ASPHALT DRIVEWAY
-  PROPOSED CEMENT CONCRETE SIDEWALK AND CEMENT CONCRETE DRIVEWAY AND CEMENT CONCRETE PEDESTRIAN CURB RAMPS
-  PROPOSED GRASS/LANDSCAPE AREA
-  PROPOSED RAPID FLASHING BEACON
-  PROPOSED TRAFFIC SIGNAL
-  MBTA BUS STOP
-  MBTA BUS SHELTER

**WATERTOWN
ROUTE 16 (MOUNT AUBURN STREET)**

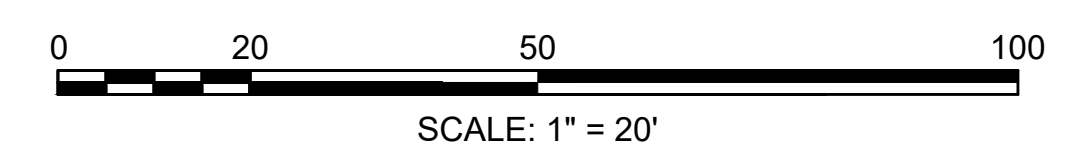
STATE	FED. AID PROJ. NO.	SHEET NO.	TOTAL SHEETS
MA	-		
PROJECT FILE NO. 607777			

FINAL DESIGN OPEN HOUSE RENDERING
SHEET 4 OF 18



CONTINUED ON SHEET NO. 3

CONTINUED ON SHEET NO. 5



PREPARED BY: JUNE 27, 2023
Tighe & Bond
Engineers | Environmental Specialists