

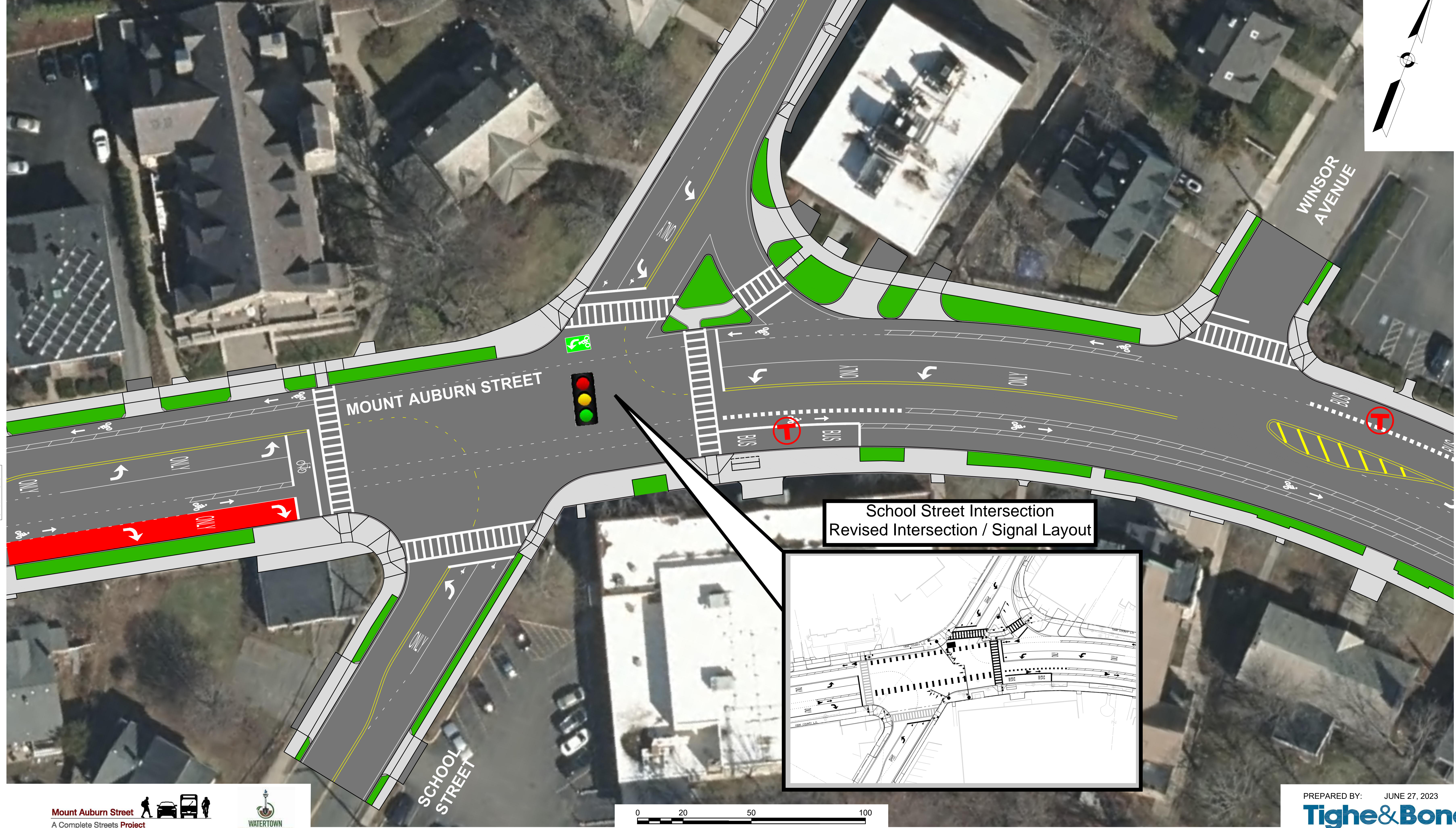
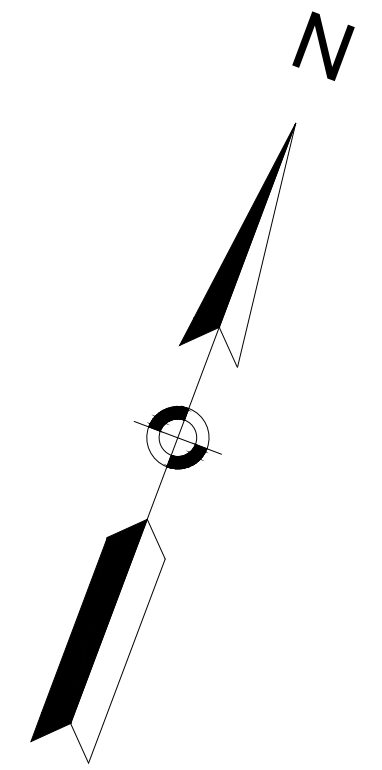
**LEGEND**

-  PROPOSED HOT MIX ASPHALT ROADWAY AND HOT MIX ASPHALT DRIVEWAY
-  PROPOSED CEMENT CONCRETE SIDEWALK AND CEMENT CONCRETE DRIVEWAY AND CEMENT CONCRETE PEDESTRIAN CURB RAMPS
-  PROPOSED GRASS/LANDSCAPE AREA
-  PROPOSED RAPID FLASHING BEACON
-  PROPOSED TRAFFIC SIGNAL
-  MBTA BUS STOP
-  MBTA BUS SHELTER

**WATERTOWN  
ROUTE 16 (MOUNT AUBURN STREET)**

STATE	FED. AID PROJ. NO.	SHEET NO.	TOTAL SHEETS
MA	-		
PROJECT FILE NO. 607777			

FINAL DESIGN OPEN HOUSE RENDERING  
SHEET 9 OF 18



CONTINUED ON SHEET NO. 8

CONTINUED ON SHEET NO. 10

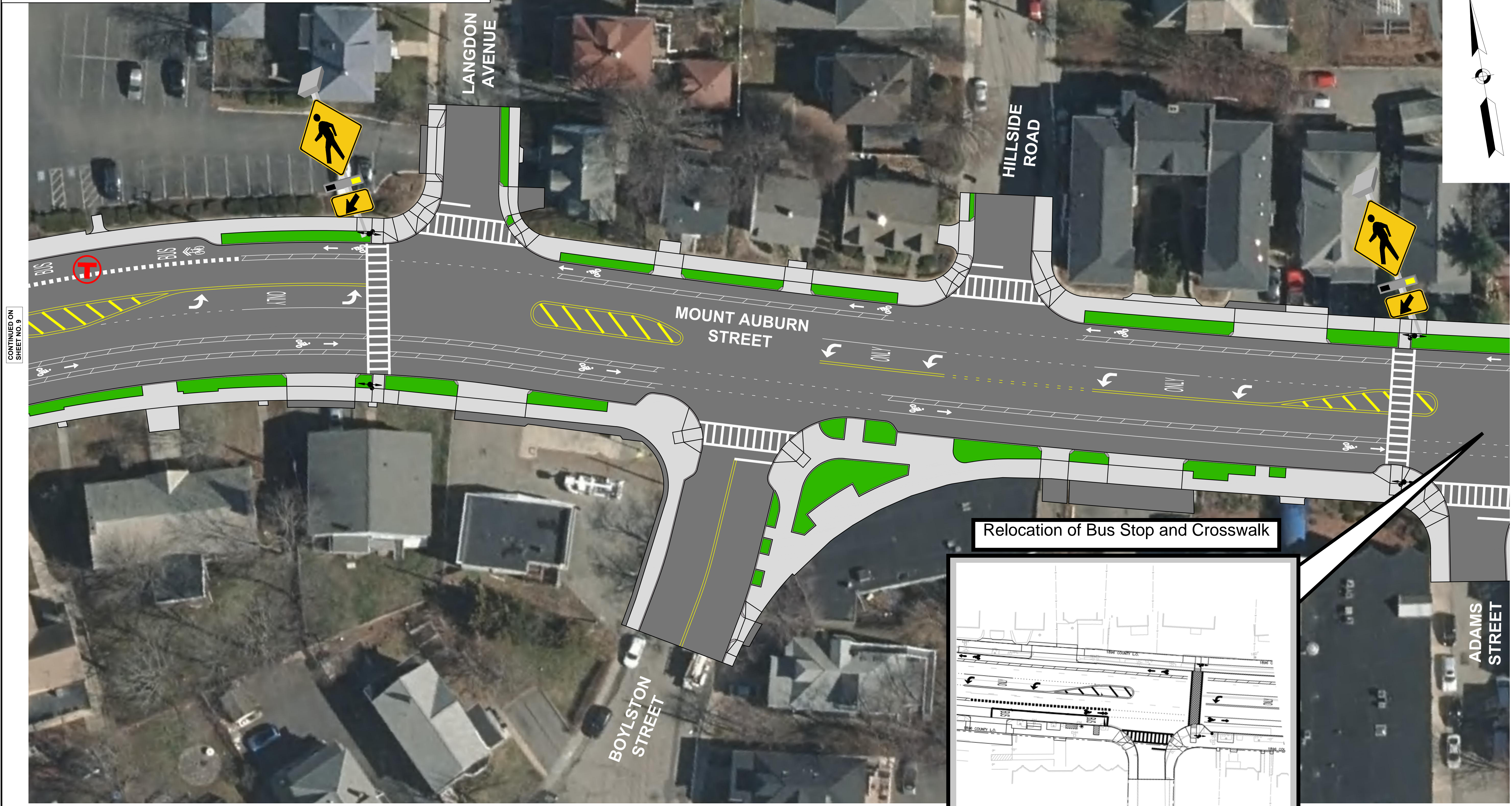
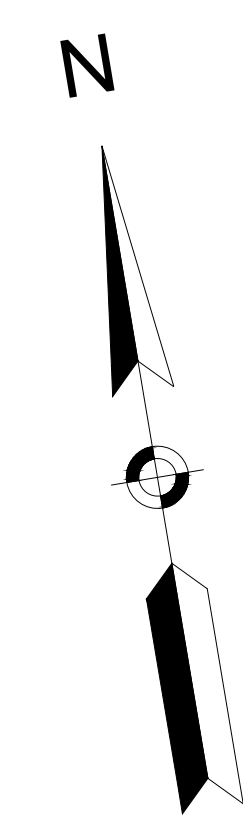
**LEGEND**

-  PROPOSED HOT MIX ASPHALT ROADWAY AND HOT MIX ASPHALT DRIVEWAY
-  PROPOSED CEMENT CONCRETE SIDEWALK AND CEMENT CONCRETE DRIVEWAY AND CEMENT CONCRETE PEDESTRIAN CURB RAMP
-  PROPOSED GRASS/LANDSCAPE AREA
-  PROPOSED RAPID FLASHING BEACON
-  PROPOSED TRAFFIC SIGNAL
-  MBTA BUS STOP
-  MBTA BUS SHELTER

**WATERTOWN  
ROUTE 16 (MOUNT AUBURN STREET)**

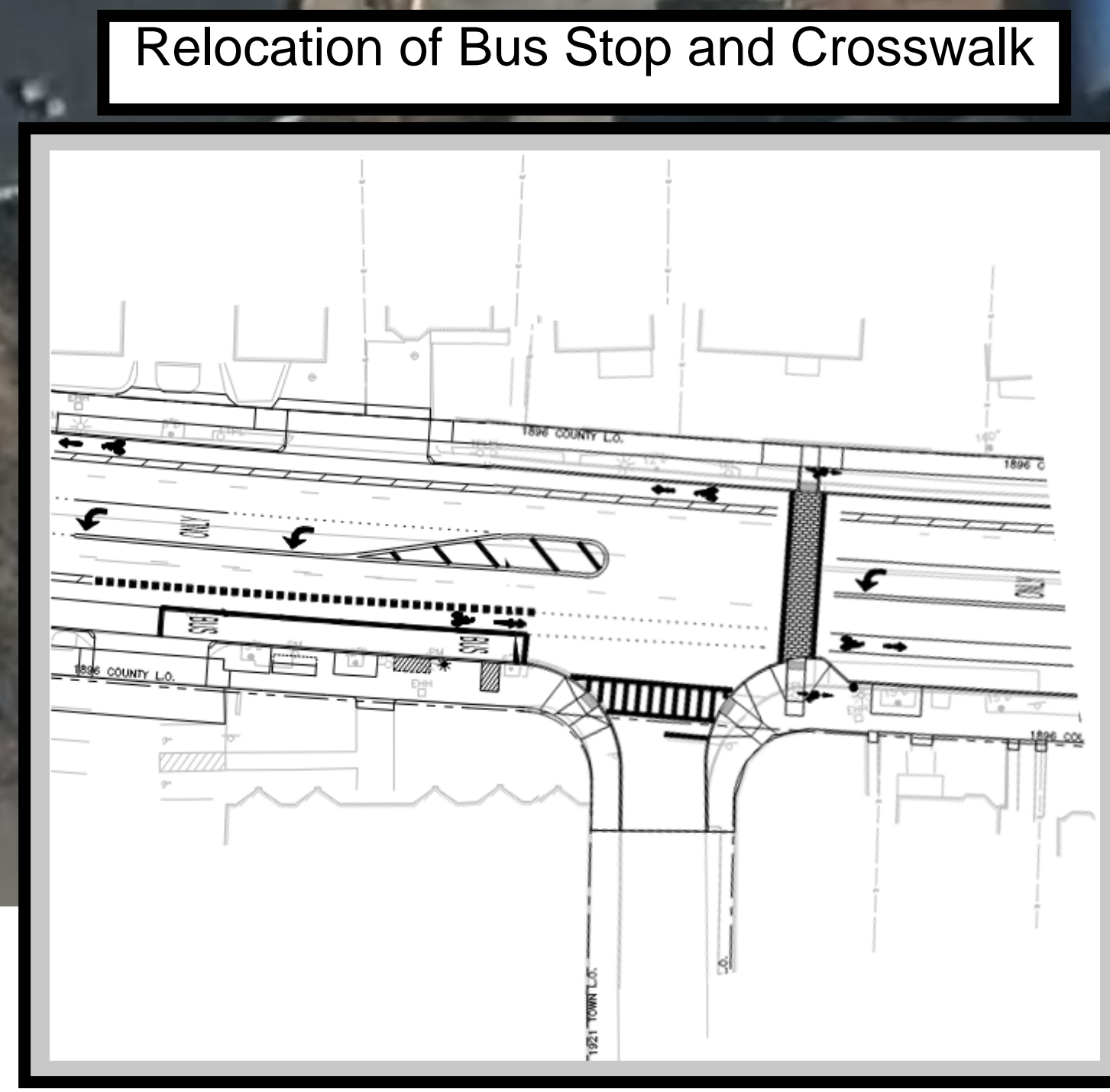
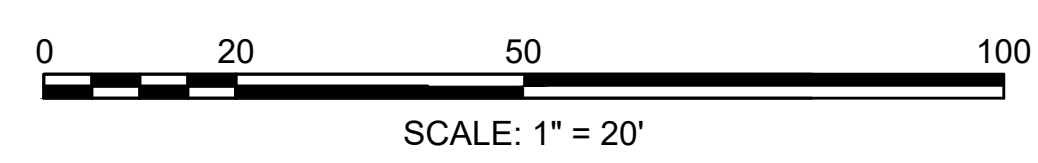
STATE	FED. AID PROJ. NO.	SHEET NO.	TOTAL SHEETS
MA	-		
PROJECT FILE NO. 607777			

FINAL DESIGN OPEN HOUSE RENDERING  
SHEET 10 OF 18




CONTINUED ON SHEET NO. 9

CONTINUED ON SHEET NO. 11



PREPARED BY: JUNE 27, 2023  
**Tighe & Bond**  
Engineers | Environmental Specialists

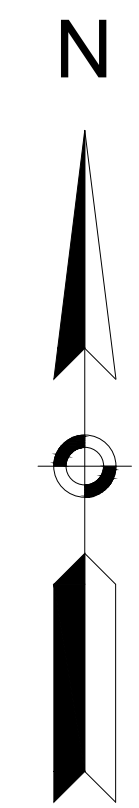
**LEGEND**

-  PROPOSED HOT MIX ASPHALT ROADWAY AND HOT MIX ASPHALT DRIVEWAY
-  PROPOSED CEMENT CONCRETE SIDEWALK AND CEMENT CONCRETE DRIVEWAY AND CEMENT CONCRETE PEDESTRIAN CURB RAMP
-  PROPOSED GRASS/LANDSCAPE AREA
-  PROPOSED RAPID FLASHING BEACON
-  PROPOSED TRAFFIC SIGNAL
-  MBTA BUS STOP
-  MBTA BUS SHELTER

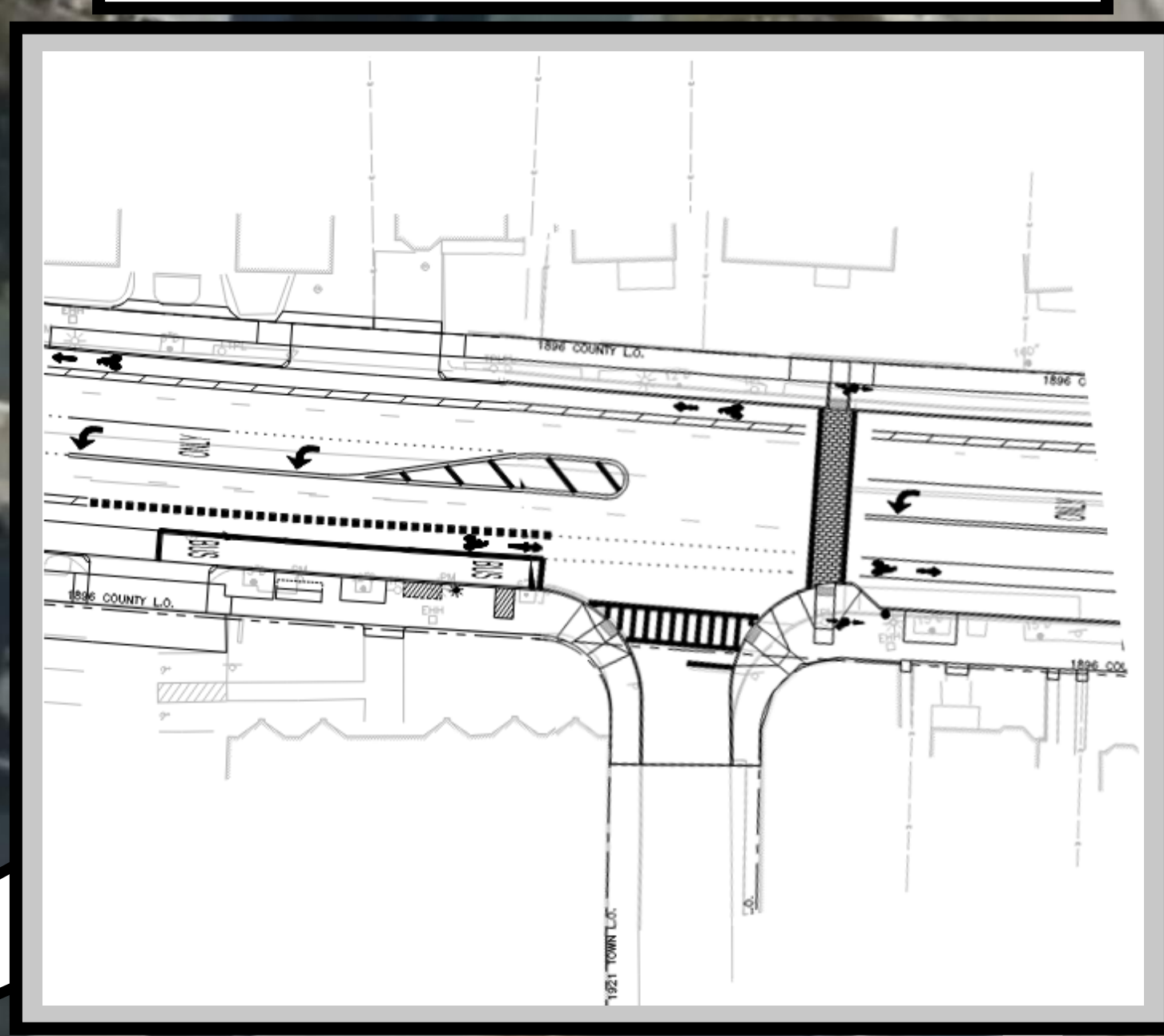
**WATERTOWN  
ROUTE 16 (MOUNT AUBURN STREET)**

STATE	FED. AID PROJ. NO.	SHEET NO.	TOTAL SHEETS
MA	-	11	18
PROJECT FILE NO. 607777			

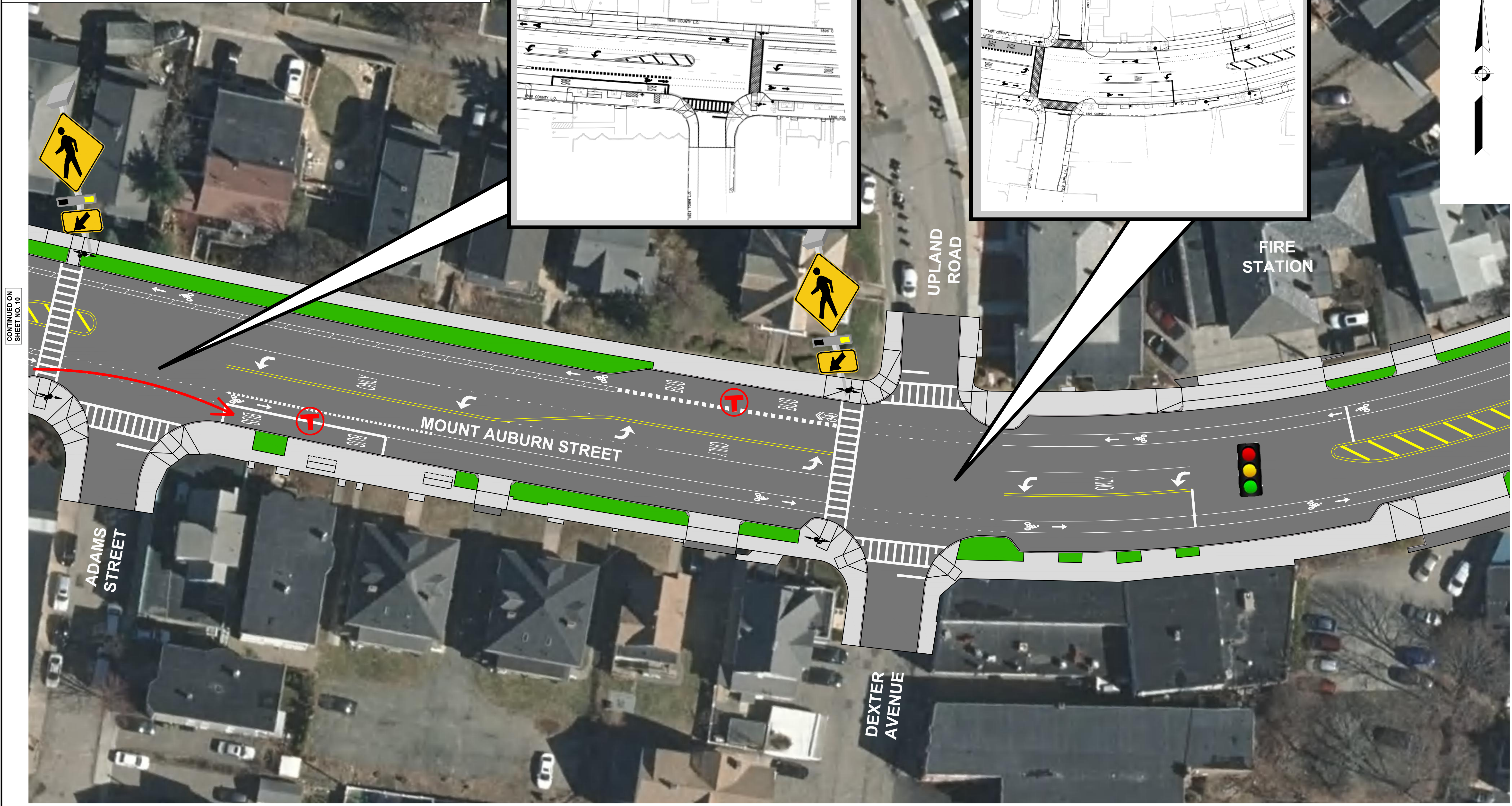
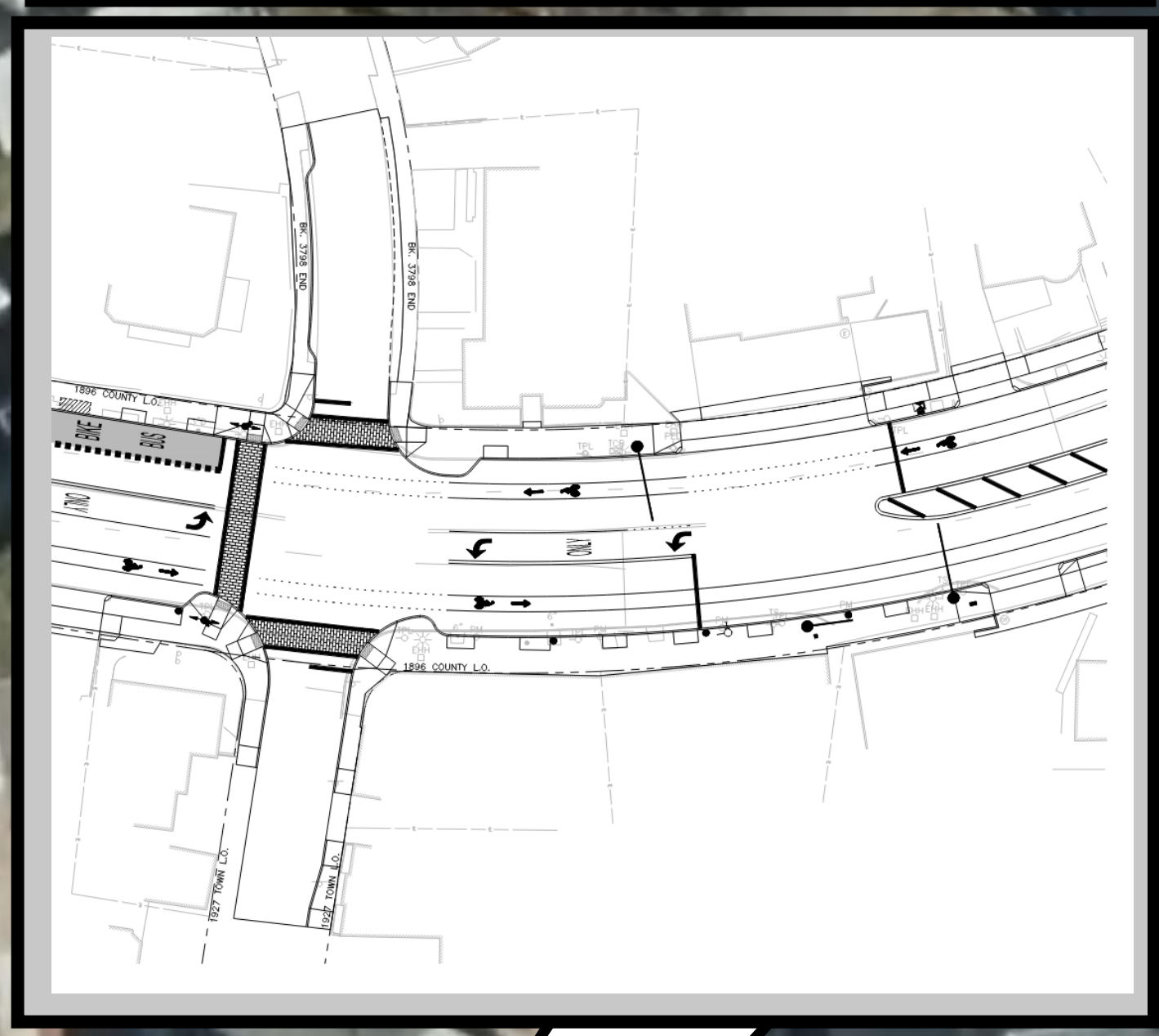
FINAL DESIGN OPEN HOUSE RENDERING  
SHEET 11 OF 18



**Relocation of Bus Stop and Crosswalk**




**Loading Zones / On-street Parking Updates**



CONTINUED ON SHEET NO. 10

CONTINUED ON SHEET NO. 12

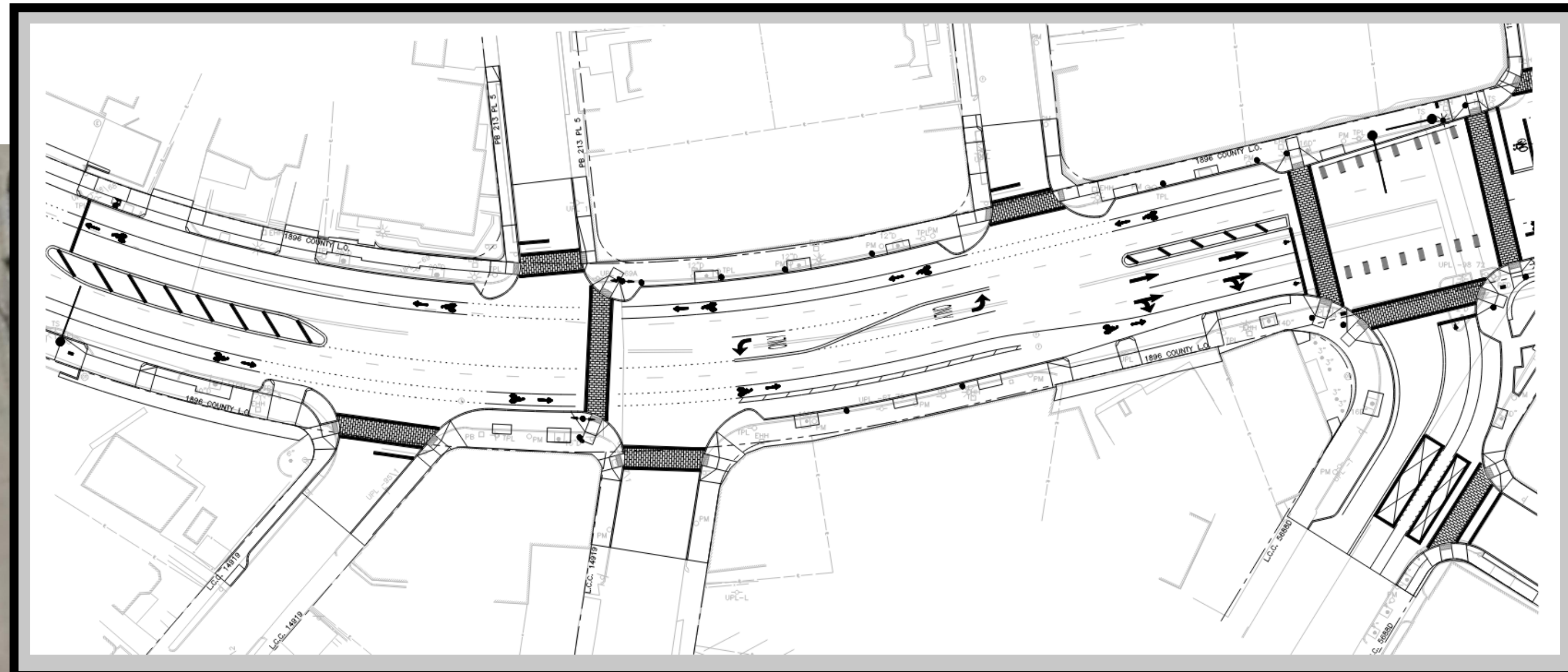
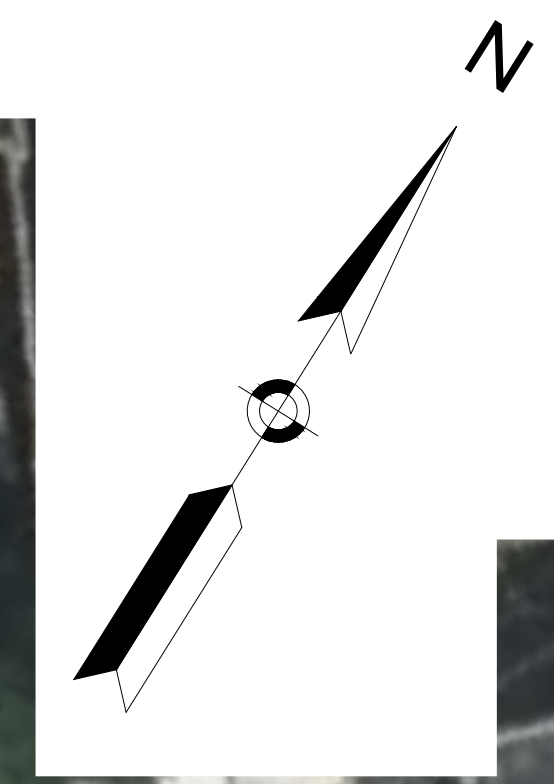
**LEGEND**

-  PROPOSED HOT MIX ASPHALT ROADWAY AND HOT MIX ASPHALT DRIVEWAY
-  PROPOSED CEMENT CONCRETE SIDEWALK AND CEMENT CONCRETE DRIVEWAY AND CEMENT CONCRETE PEDESTRIAN CURB RAMPS
-  PROPOSED GRASS/LANDSCAPE AREA
-  PROPOSED RAPID FLASHING BEACON
-  PROPOSED TRAFFIC SIGNAL
-  MBTA BUS STOP
-  MBTA BUS SHELTER

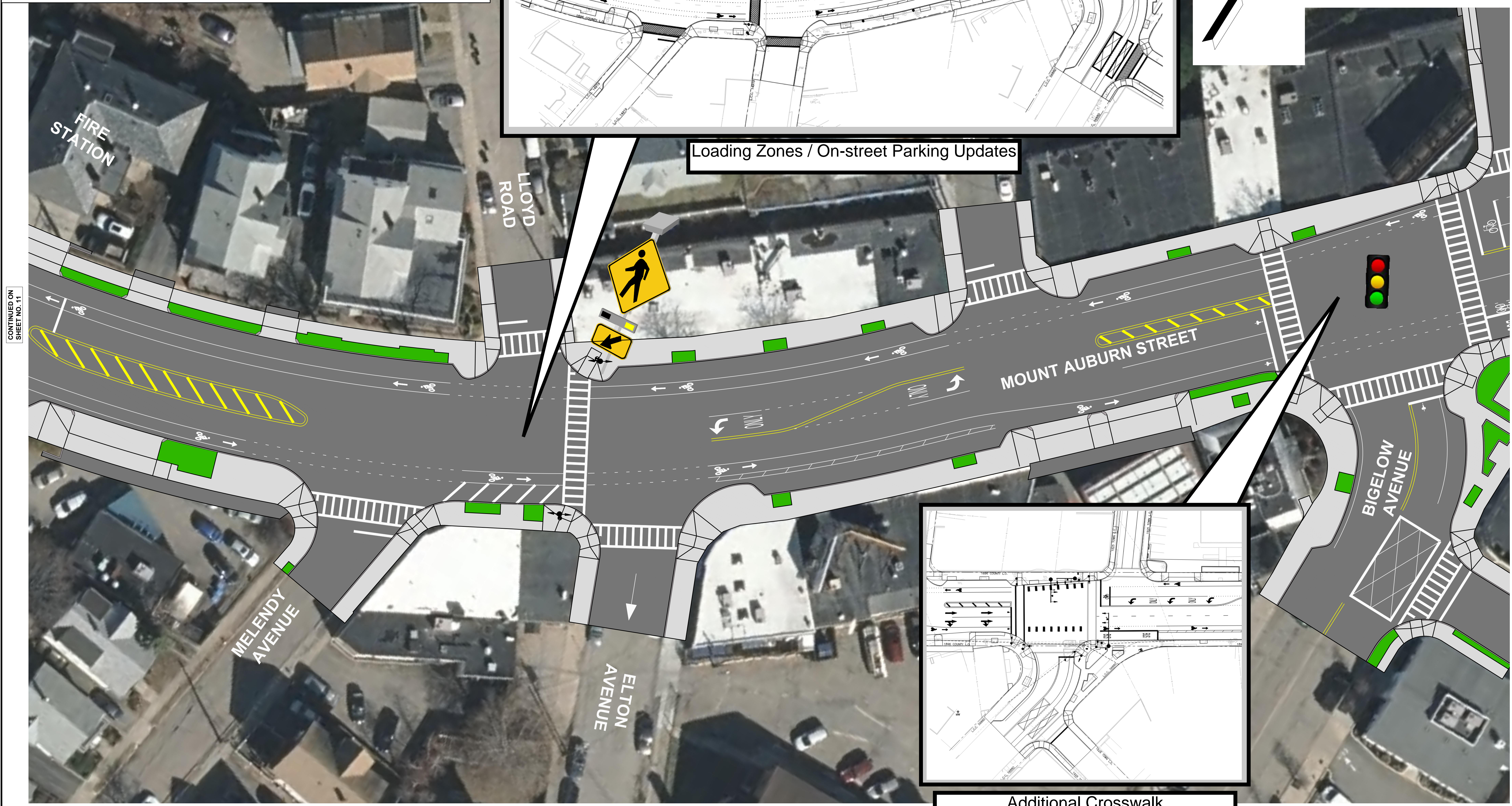
**WATERTOWN  
ROUTE 16 (MOUNT AUBURN STREET)**

STATE	FED. AID PROJ. NO.	SHEET NO.	TOTAL SHEETS
MA	-	-	-
PROJECT FILE NO. 607777			

FINAL DESIGN OPEN HOUSE RENDERING  
SHEET 12 OF 18

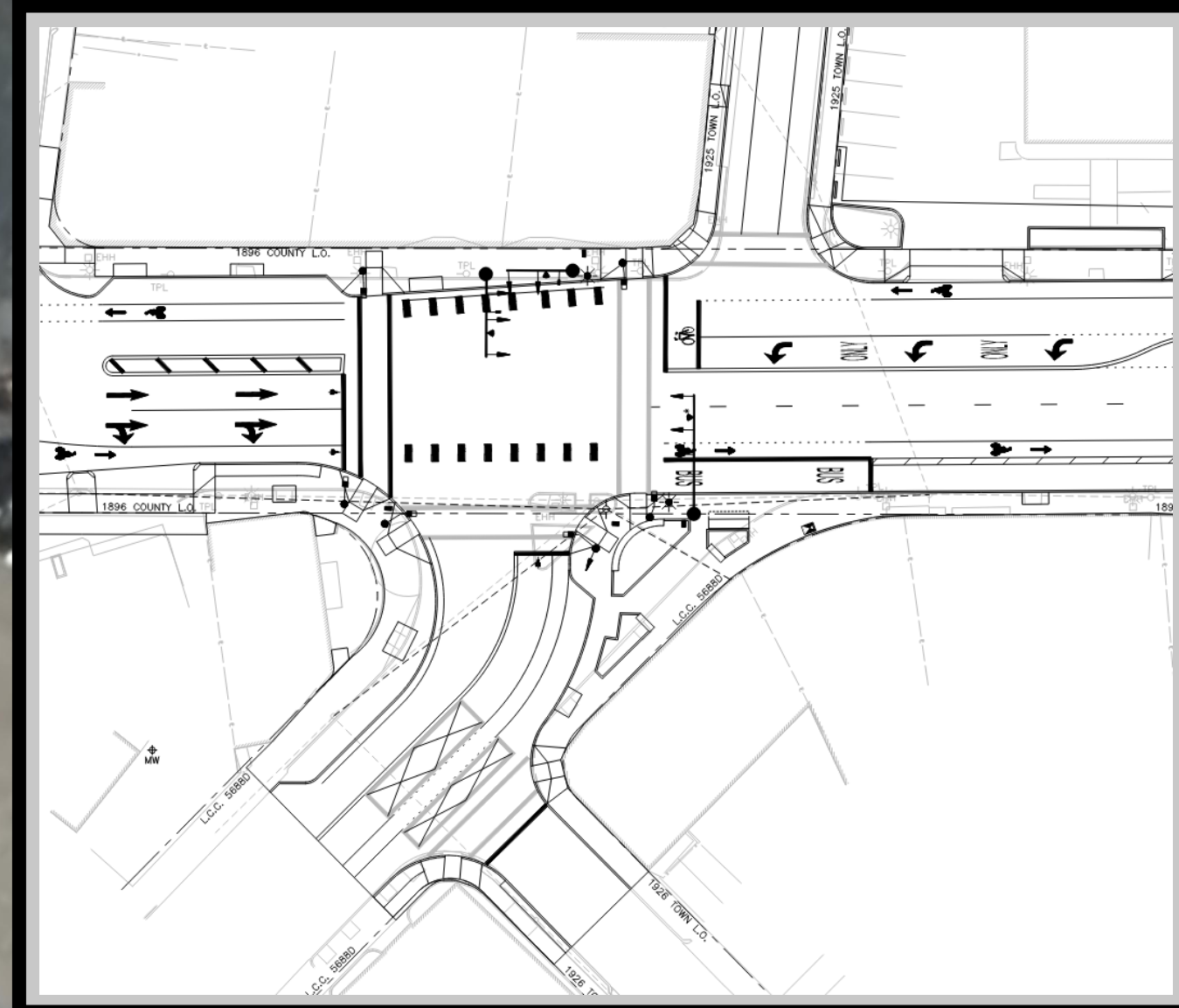


Loading Zones / On-street Parking Updates



CONTINUED ON SHEET NO. 11

CONTINUED ON SHEET NO. 13

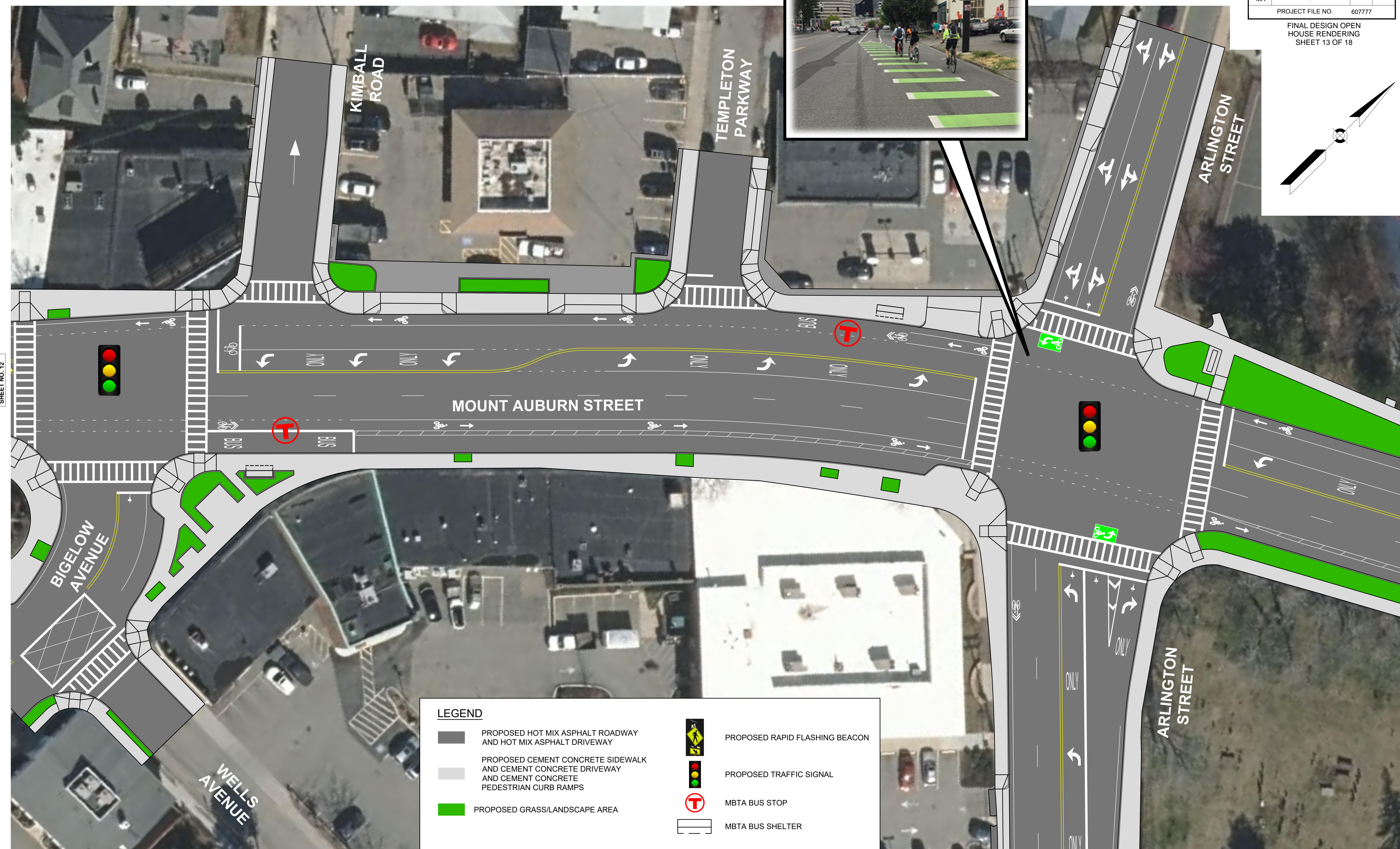
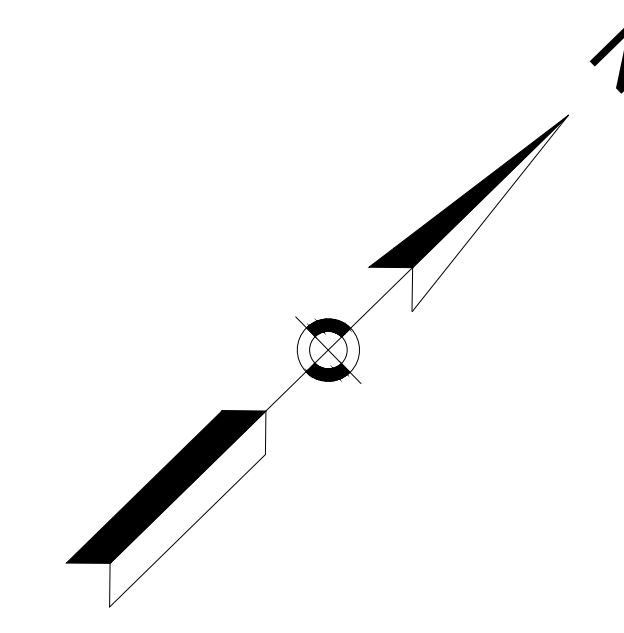


Additional Crosswalk at Mt. Auburn Street / Bicycle Lane on Bigelow Avenue

**WATERTOWN  
ROUTE 16 (MOUNT AUBURN STREET)**

STATE	FED. AID PROJ. NO.	SHEET NO.	TOTAL SHEETS
MA	-		
PROJECT FILE NO. 607777			

FINAL DESIGN OPEN  
HOUSE RENDERING  
SHEET 13 OF 18

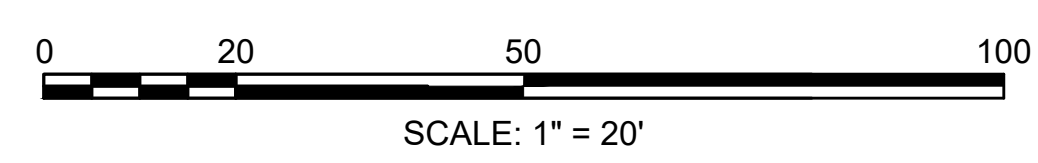


**LEGEND**

- PROPOSED HOT MIX ASPHALT ROADWAY AND HOT MIX ASPHALT DRIVEWAY
- PROPOSED CEMENT CONCRETE SIDEWALK AND CEMENT CONCRETE DRIVEWAY AND CEMENT CONCRETE PEDESTRIAN CURB RAMPS
- PROPOSED GRASS/LANDSCAPE AREA
- PROPOSED RAPID FLASHING BEACON
- PROPOSED TRAFFIC SIGNAL
- MBTA BUS STOP
- MBTA BUS SHELTER

CONTINUED ON  
SHEET NO. 12

CONTINUED ON  
SHEET NO. 14



CONTINUED ON  
SHEET NO. 18

PREPARED BY: JUNE 27, 2023  
**Tighe & Bond**  
Engineers | Environmental Specialists