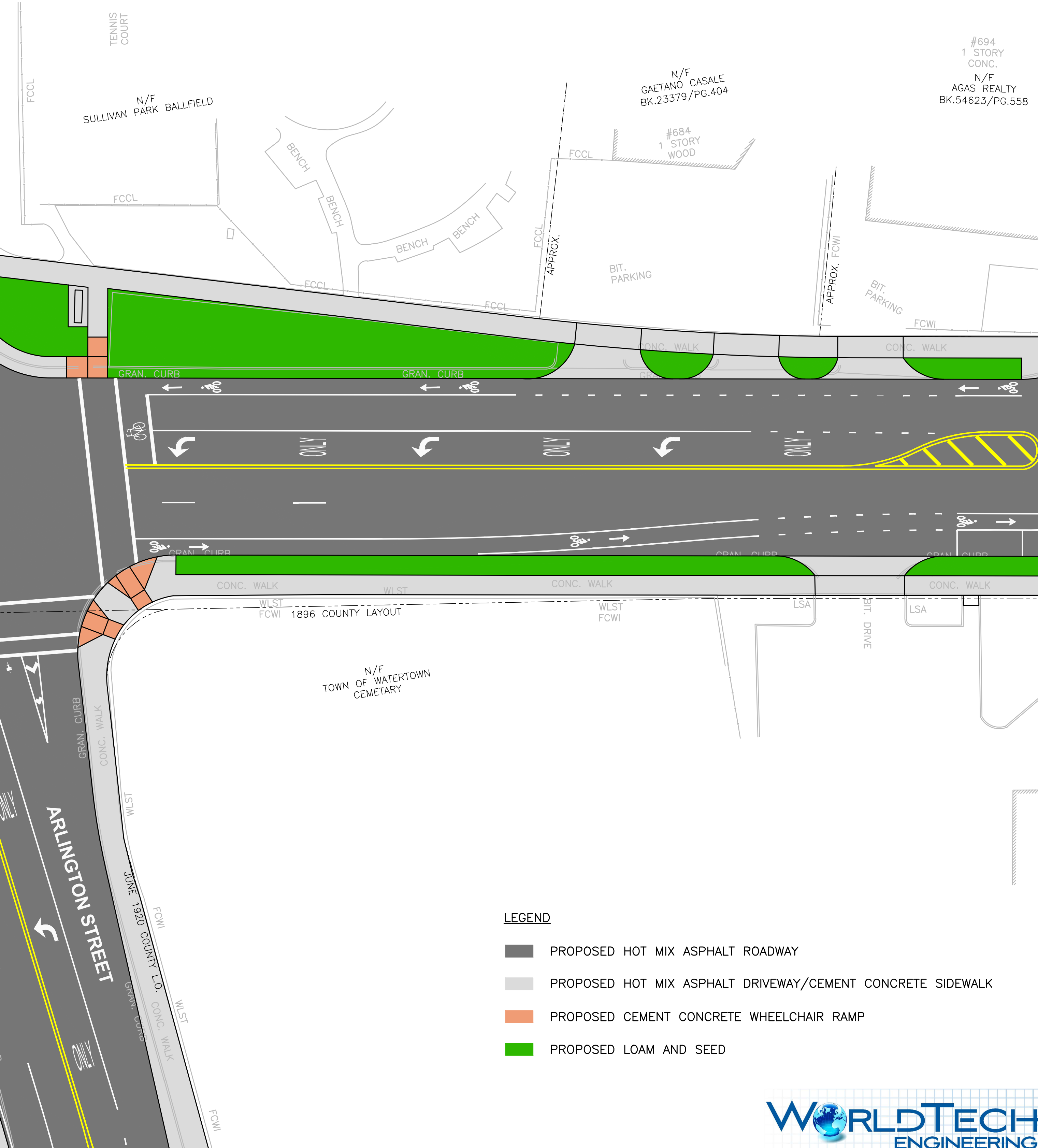
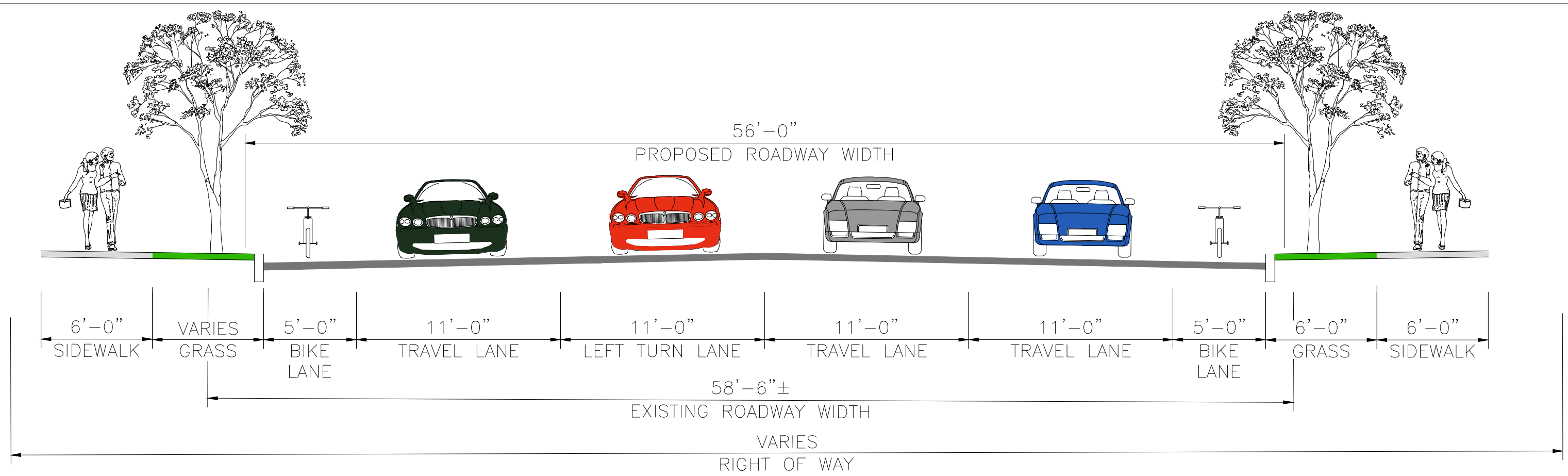
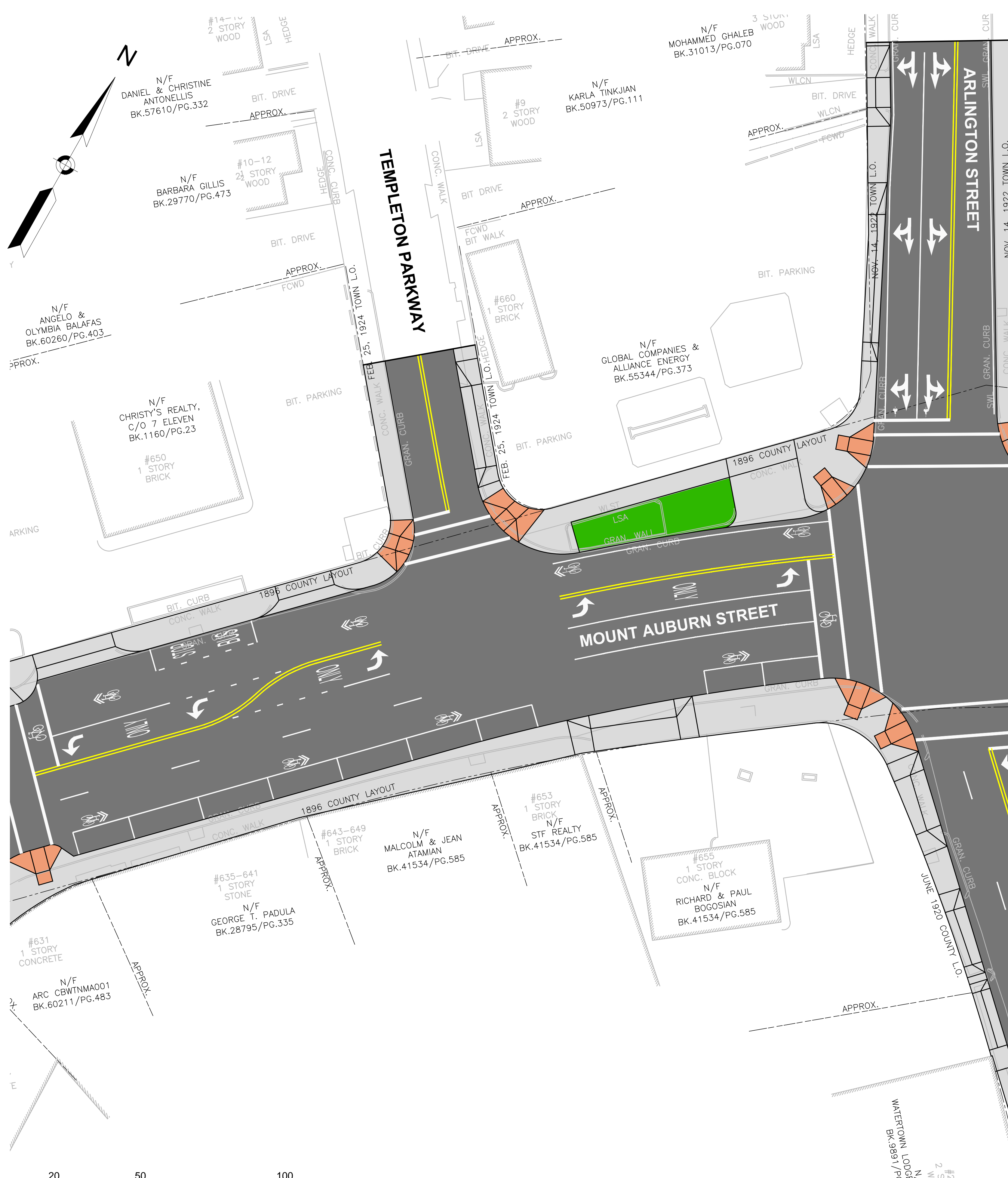
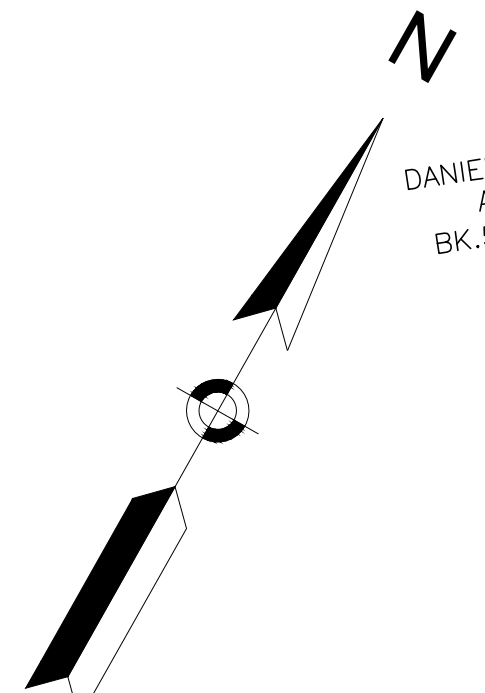


WATERTOWN, MA. MOUNT AUBURN STREET AT ARLINGTON STREET



- LEGEND**
- PROPOSED HOT MIX ASPHALT ROADWAY
 - PROPOSED HOT MIX ASPHALT DRIVEWAY/CEMENT CONCRETE SIDEWALK
 - PROPOSED CEMENT CONCRETE WHEELCHAIR RAMP
 - PROPOSED LOAM AND SEED

